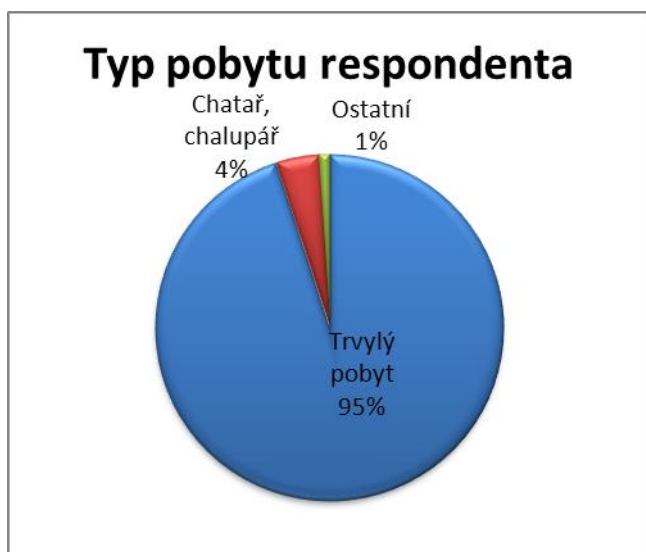
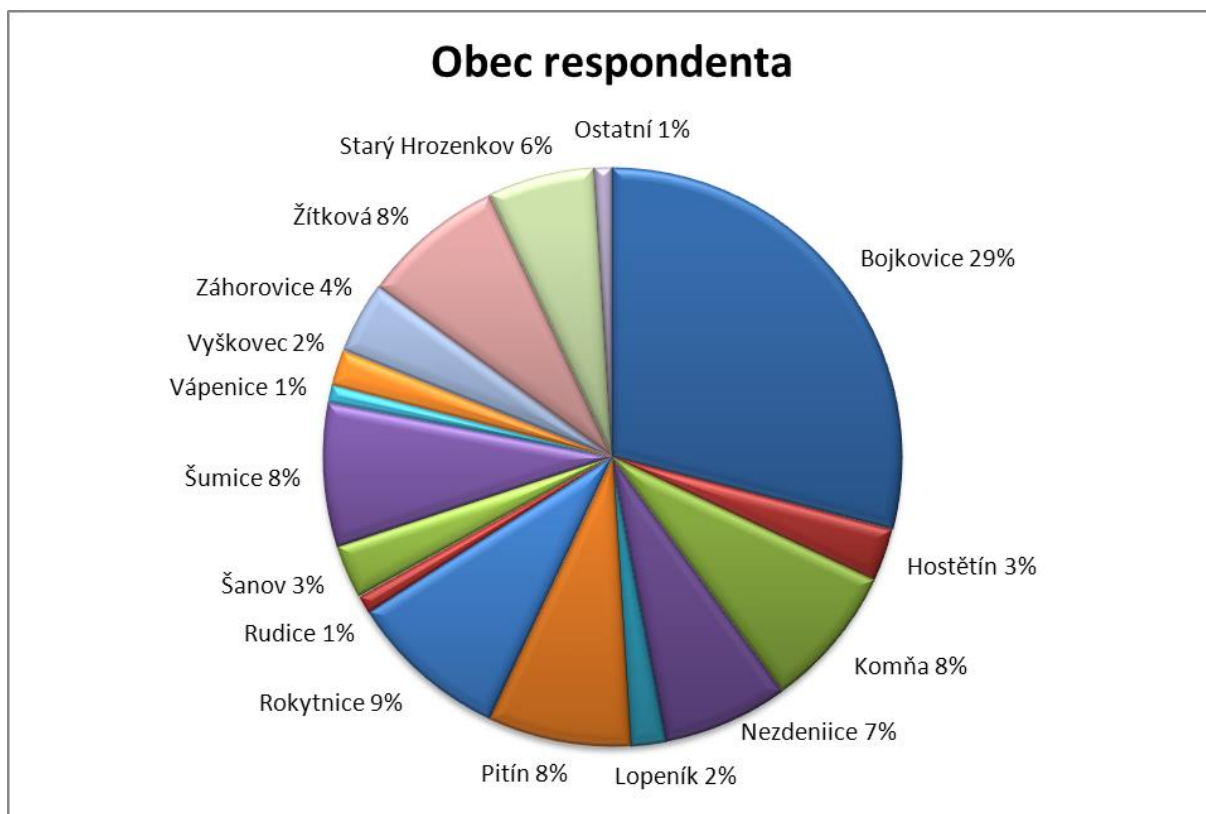
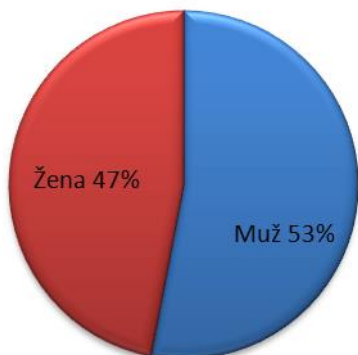


# DOTAZNÍK ISÚ MAS BOJKOVSKA

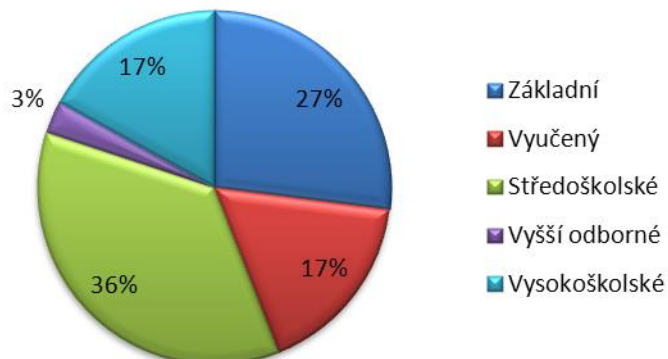
Počet respondentů: 492



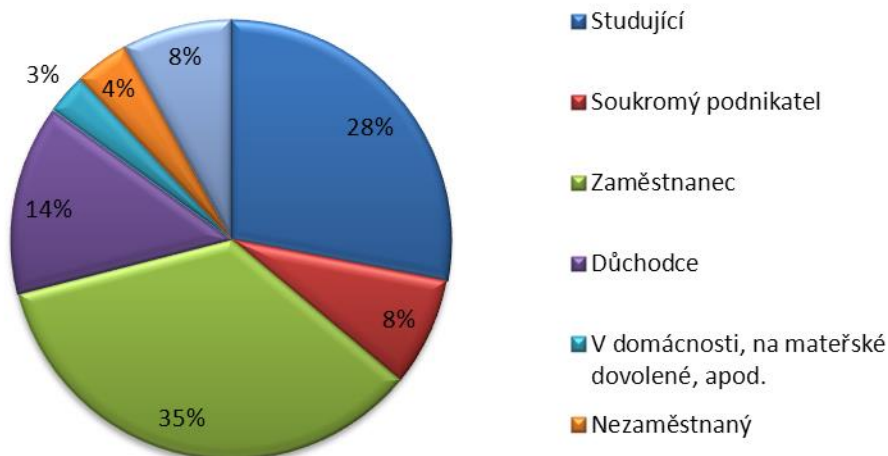
### Pohlaví respondenta



### Vzdělání respondenta



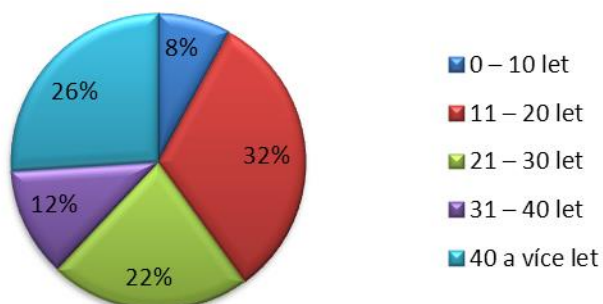
### Ekonomická aktivita respondenta



### Míst pracoviště/studia respondenta

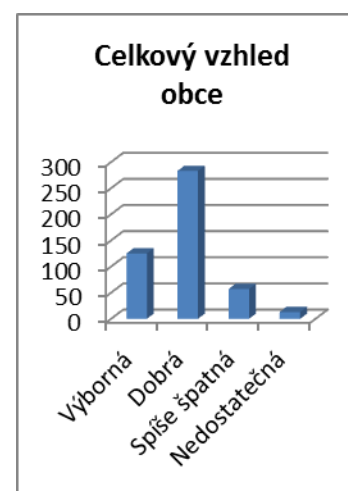
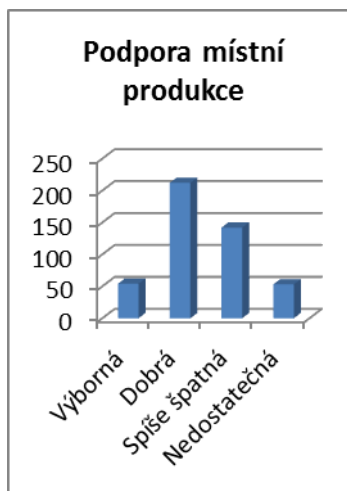
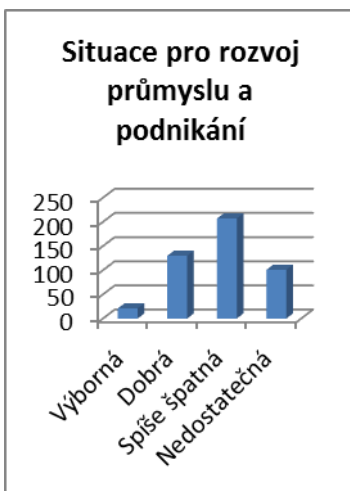
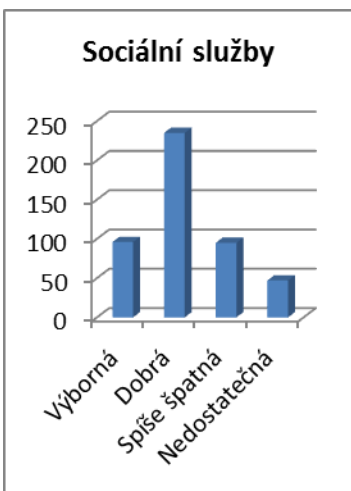
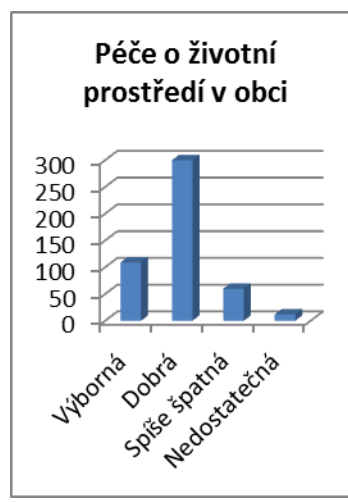
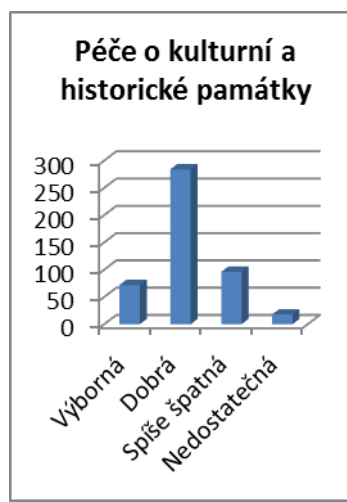
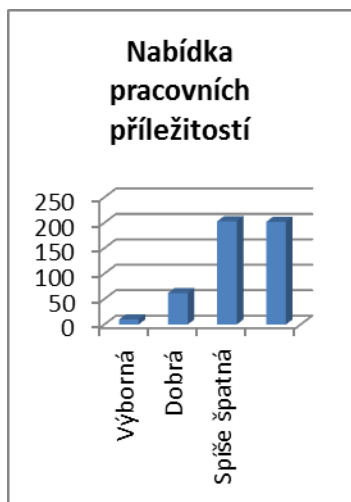
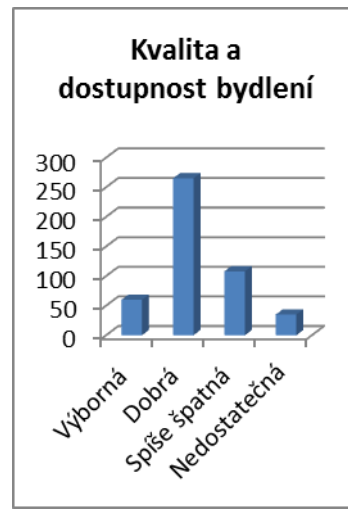
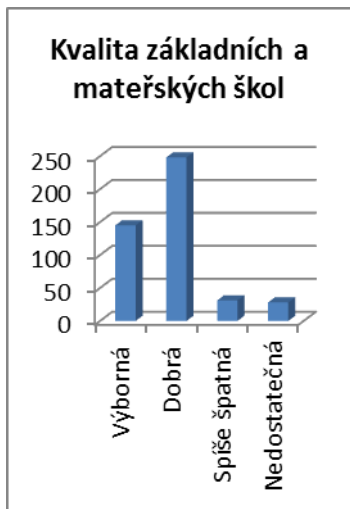
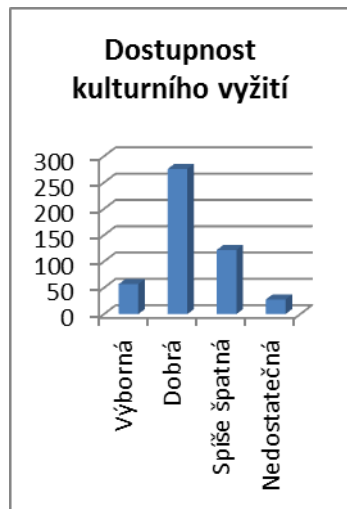


### Délka pobytu respondenta v obci



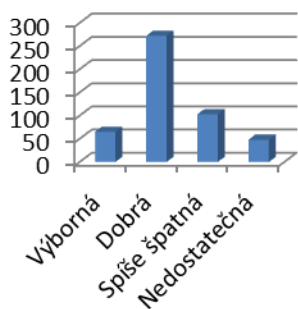
## Hodnocení úrovně sužeb a infrastruktury v obci

### Služby

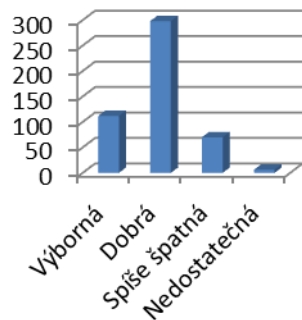


## Infrastruktura a zařízení

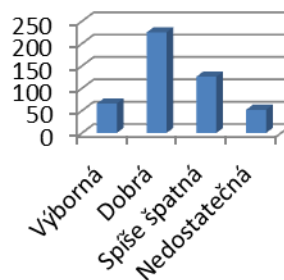
### Místní komunikace



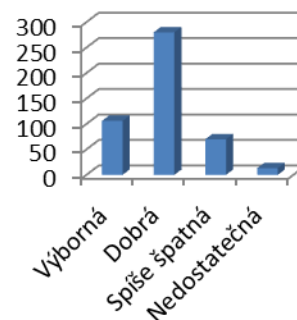
### Vzhled veřejných budov



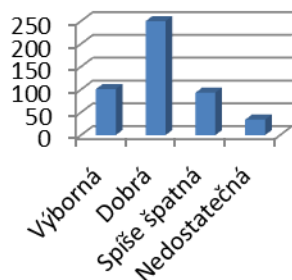
### Možnost veřejného přístupu k internetu



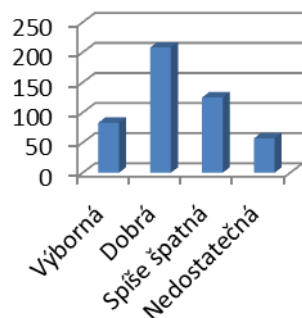
### Připojení internetu v obci



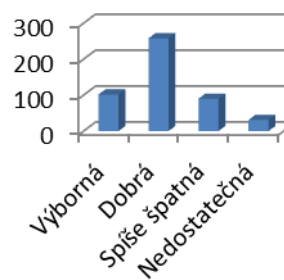
### Kvalita a dostupnost sportovišť



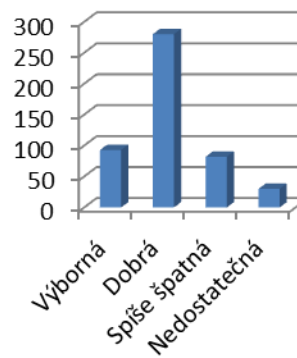
### Kvalita dětských hřišť



### Dosavadní rekonstrukce veřejných ploch



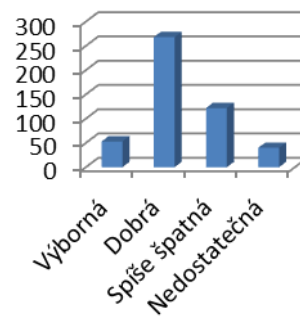
### Veřejné osvětlení



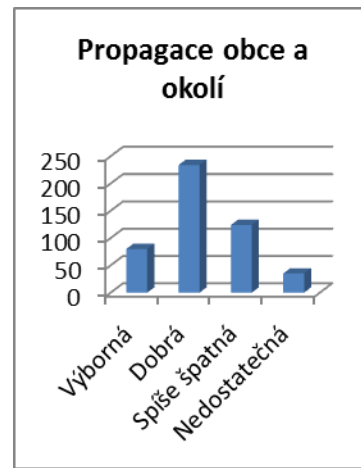
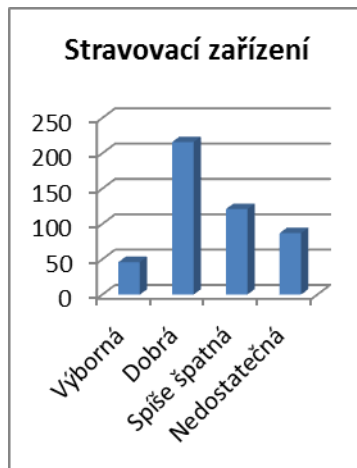
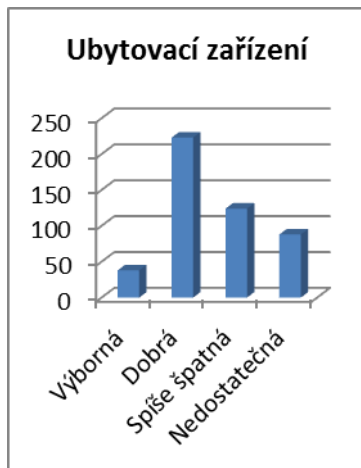
### Počet parkovacích míst v obci



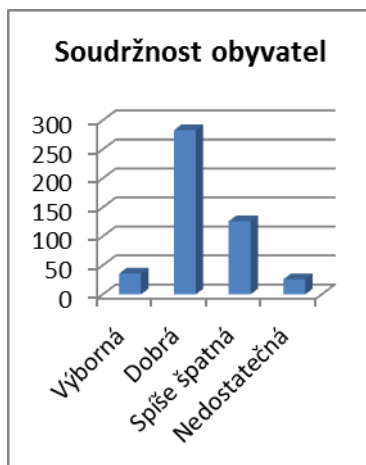
### Dopravní infrastruktura



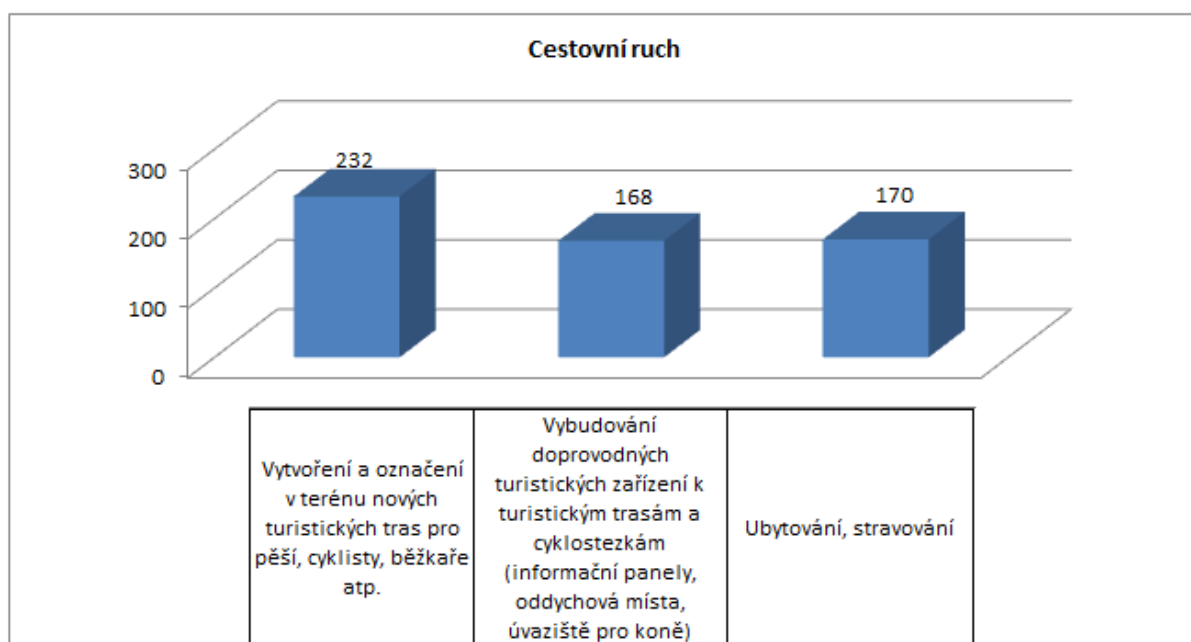
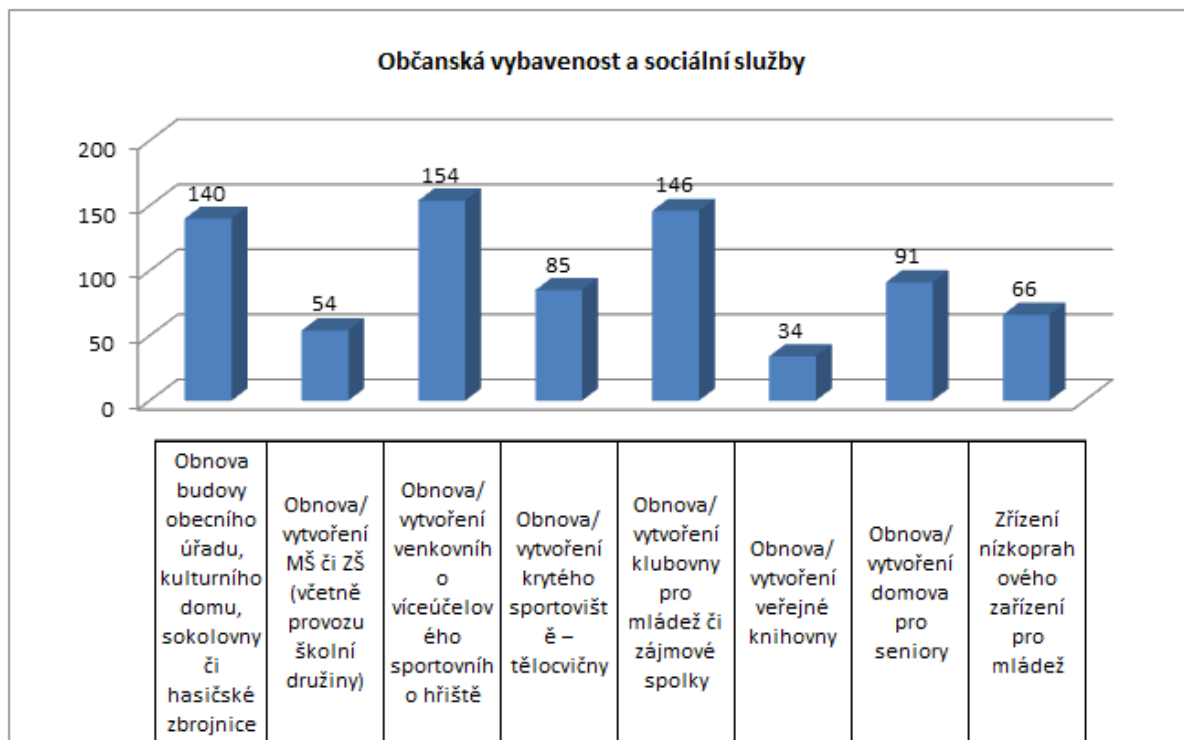
## Cestovní ruch

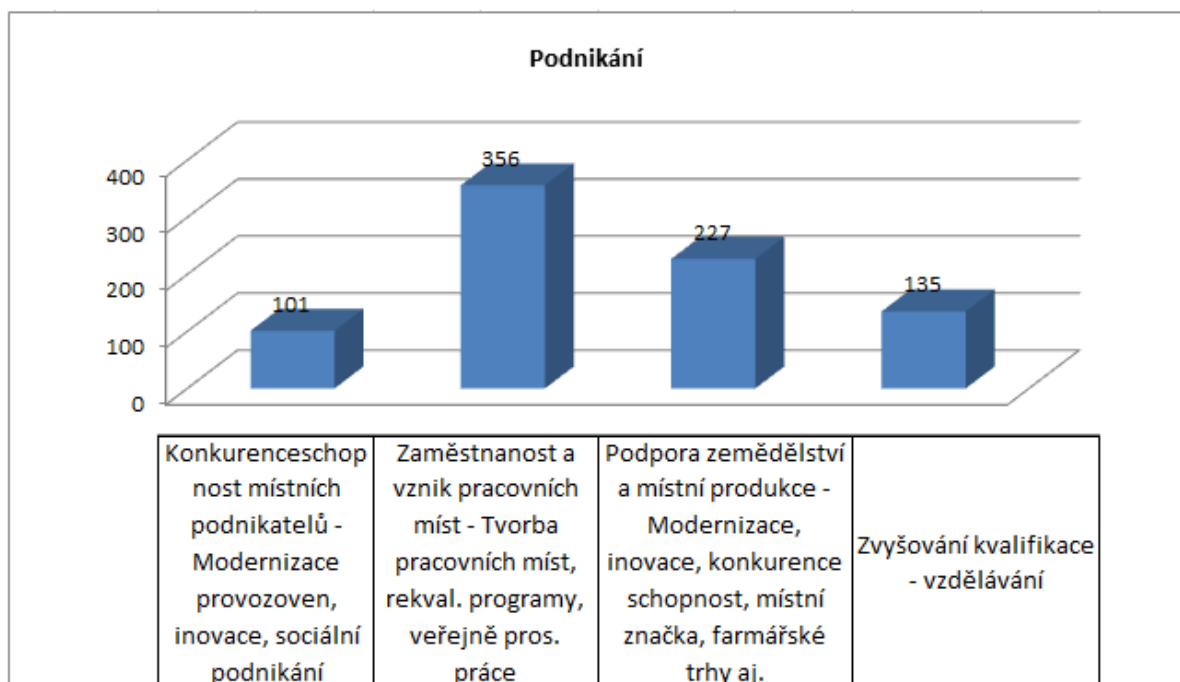
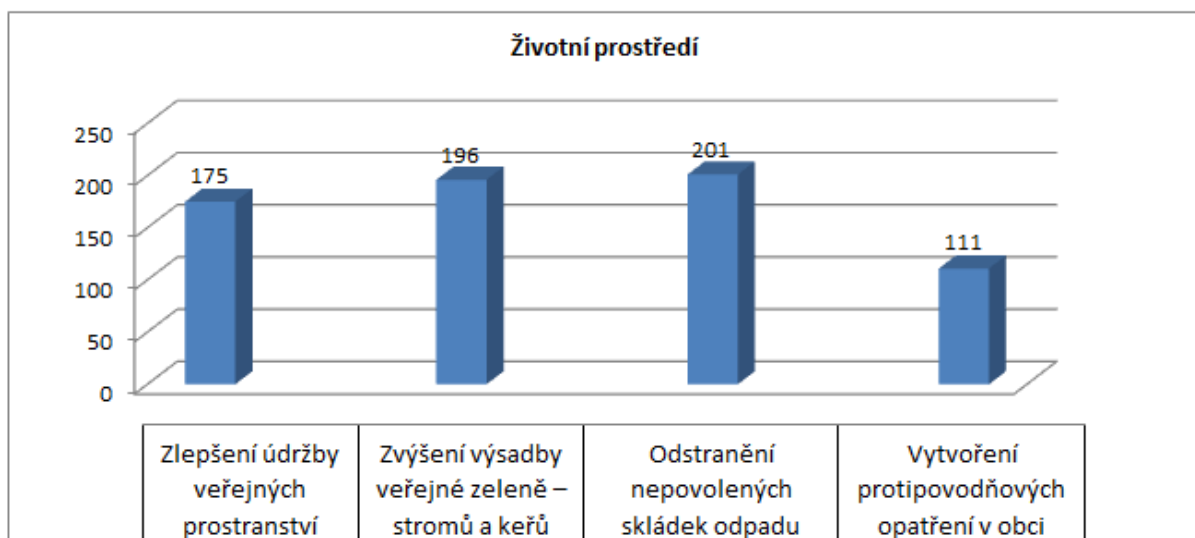


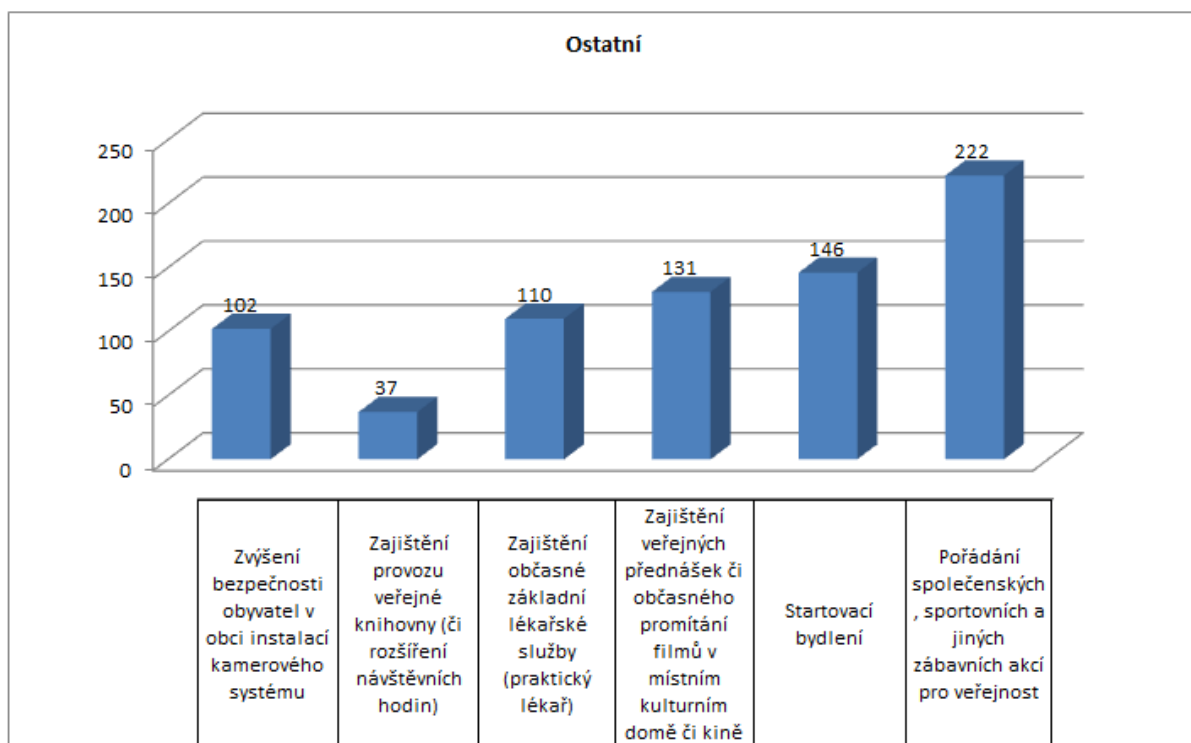
## Ostatní



## Do kterých oblastí by se mělo nejvíce investovat?







## Činnost MAS Bojkovska

